

## PRESS RELEASE

(Information dedicated to our customers: only for internal use)

### New additions to the SWITCHABLE water pumps range

Metelli Group expands its range of switchable water pumps, adding 4 new items for Mercedes-Benz applications\* to its product catalogue. These items complement the 24-1167/PA1167/101167 model for VOLKSWAGEN 1.2 TSi engines.

Metelli's patented drive system allows fluid circulation in the cooling circuit to be stopped when not needed, by using a pneumatically activated damper.

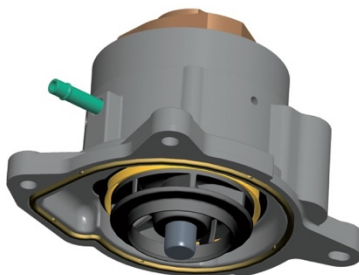


The new applications are designed for the **VIANO**, **SPRINTER** and **VITO** models and for 2.143 cc and 2.148 cc diesel (engine code OM651) engines.

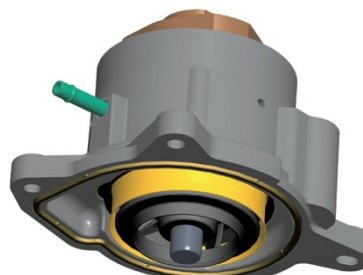
The following items are now available:

- 24-1251 / PA1251 / 101251 Viano (W639), Vito II (639) without Start/stop
- 24-1255 / PA1255 / 101255 Viano (W639), Vito II (639) with Start/stop
- 24-1264 / PA1264 / 101264 Sprinter II 3,5/5-T (906) with Start/stop
- 24-1268 / PA1268 / 101268 Sprinter II 3,5/5-T (906) without Start/stop

OPEN



CLOSE



More new applications will soon be added to the range.

\* OE equivalent spare parts

Stefano Monteleone  
Marketing Manager  
METELLI S.p.A.